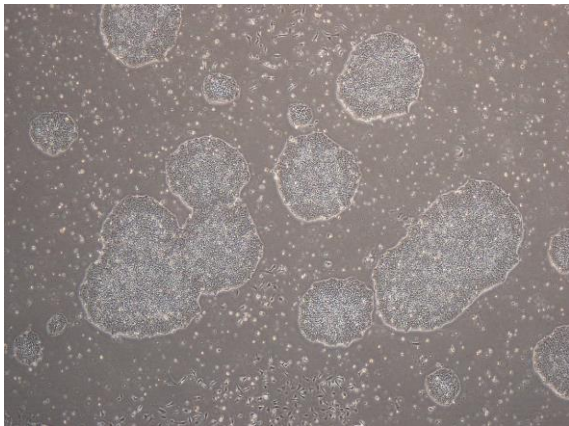
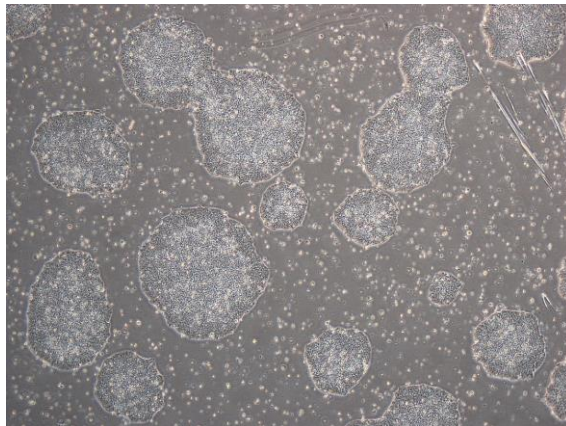


## 【 CiRA-j-1152 】 Morphology of iPSC colonies

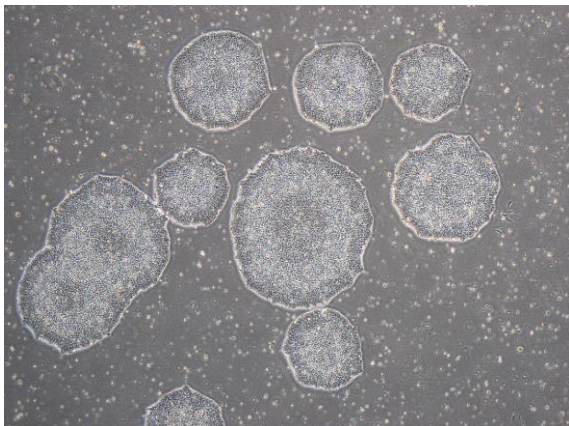
CiRA-j-1152-A: passage-2



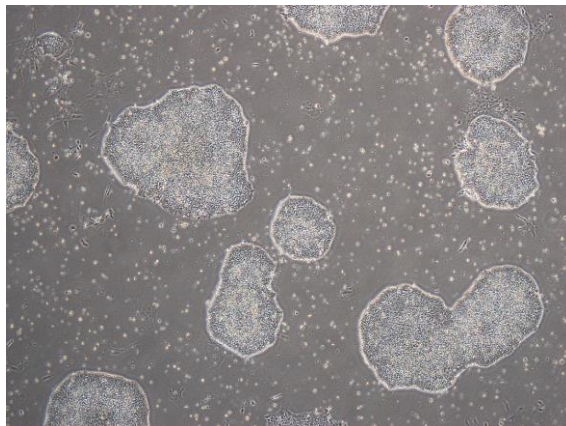
CiRA-j-1152-B: passage-2



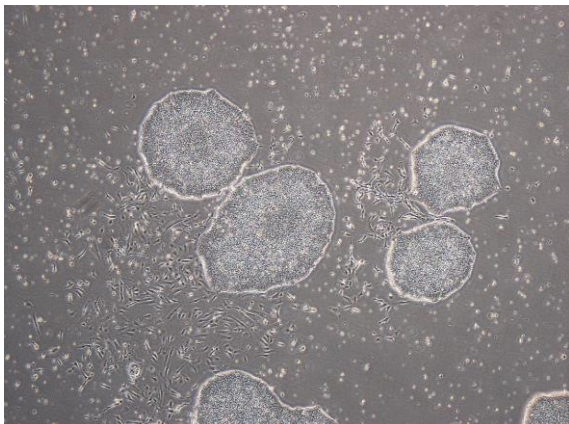
CiRA-j-1152-C: passage-2



CiRA-j-1152-D: passage-2



CiRA-j-1152-E: passage-2



CiRA-j-1152-F: passage-2



( All images were captured at 4x magnification )